

Technical rider "LIGHT MUSIC" by Thierry De Mey

Last update : 7th of July2006

note: This technical sheet must be subjected to a preliminary technical study, in agreement with the producer. In this way, the organizer must provide detailed plans of the venue (sight from top and transversal section of the whole concert room in pdf file) to the engineer in charge of the performance, Christophe Lebreton: lebreton@grame.fr

Stage:

Width : - 12m
Depth : - 10m (video projection from the front)
height before lighting: - 6m
black mat floor : (dance carpet)
Italian curtains : - to mask stage frame sides
- to frame the screen properly

Note: because of the sensitivity of the motion capture system, the room must be the darkest possible. As you see on the implantation annex, we need specifique place for video to realise it.

Forward-looking technical schedule and technical team necessary for "Light Music " alone:

The sound, video and light system can be entirely pre-installed and tested by the organizer before the arrival of the producer. However, it is preferable that the producer should be present from the beginning of the setting up in order to check the setting up according to the space.

Day 0: arrival of GRAME's organizer with the specific equipment.

Unloading and/or storage of the hardware equipment in a secure place. Meeting with the technical team.

Day 1: - 2 * 4h for the setting up:

minimal staff : 2 sound technicians, 2 light technicians, 2 stage technicians, 1 video technician

- 1 * 3h for the adjustments:

minimal staff : 1 sound technicians, 2 light technicians, 1 video technician

Day 2: - 1 * 2h rehearsal with the performer :

minimal staff : 1 light technician, 1 stage technician

- Performance

minimal staff : 1 light technician, 1 stage technician

- dismantling/loading: plan the same team as for the setting up and a secure place for the parking of the van if the loading is to be done after the show.

Day 3: - departure

Note: Please add the rehearsals session and stage technicians according to the additionnal program.

Hardware provided by the organizer:

Sound system:

- 8 loudspeakers Amadeus MPB600 like with hooks and stands according to the stage setting up
- 4 stereo amplifiers QSC PLX2402 like (for MPB600)
- 1 or 2 SUB Meyer sound USW-1P like (linked)
- 1 Mixer Yamaha DM1000 like, with 1 option card MY8AT (ADAT)
- 1 reverberation Lexicon 300 like (or equivalent)
- 1 intercom 2 stations (1 for sound desk, 1 on stage)
- 1 Monitor LCD 17" XGA

Note: the setting up of the loudspeakers should respect the standard plan, but could, of course, be modified according to the venue's constraints.

Video:

- 1 Videoprojector, 5000 lumens EPSON 8300 like
- 1 sound-screen (special cinema screens) between 6*4,5m to 8*6m according to stage setting up
- video opticals according to stage setting up

Note: The camera should not shoot the projected images. Moreover, the projected images should be reduced or transformed as it is the exact replica of what the performer is seeing on his LCD control monitor.

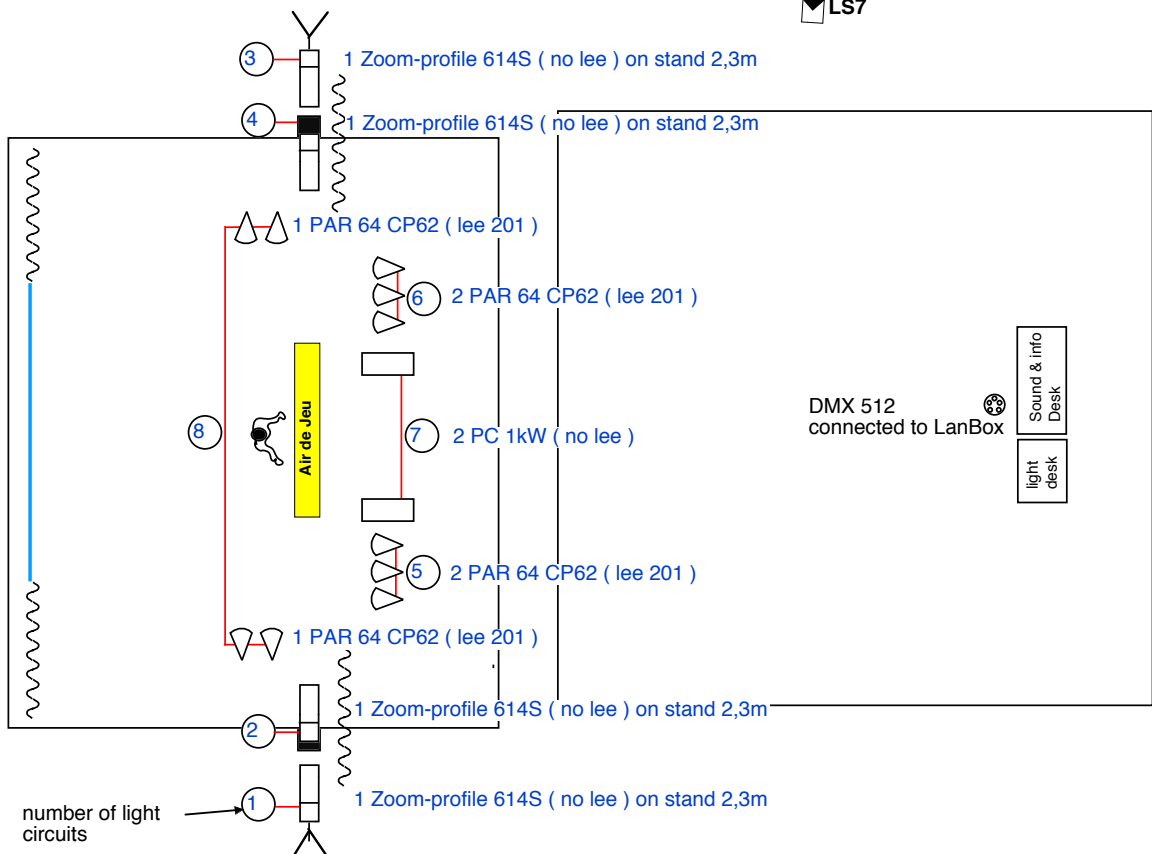
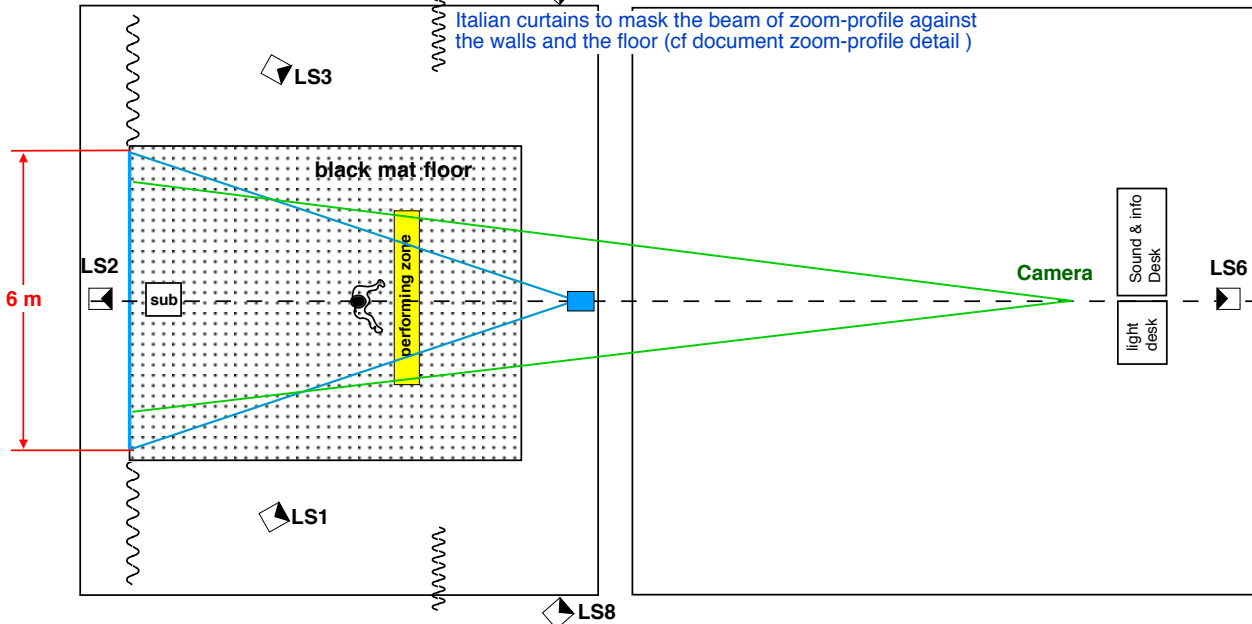
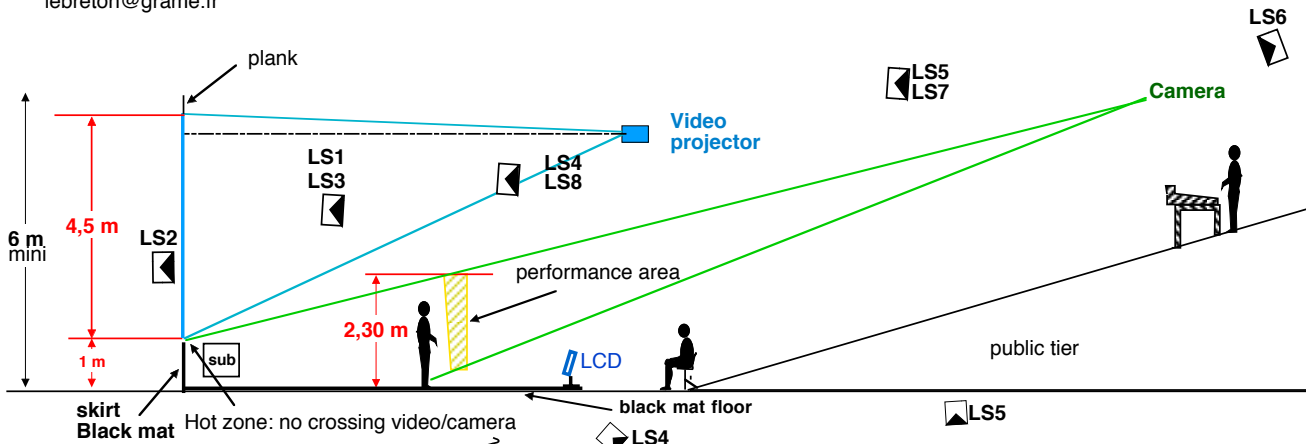
Light:

- 1 DMX512 data cable, xlr5 male to connect at the LanBox -> **see diagram and wiring annex**
- 8 circuit dimmer 3kw (minimum)
- 4 zoom profiles 614S 1Kw like
- 10 PAR 64 CP62 (large beams) all equipped with Lee 201 or 174
- 2 PC 1kw
- 4 floor supports
- 2 stands for zoom profile - 2,3 meters high

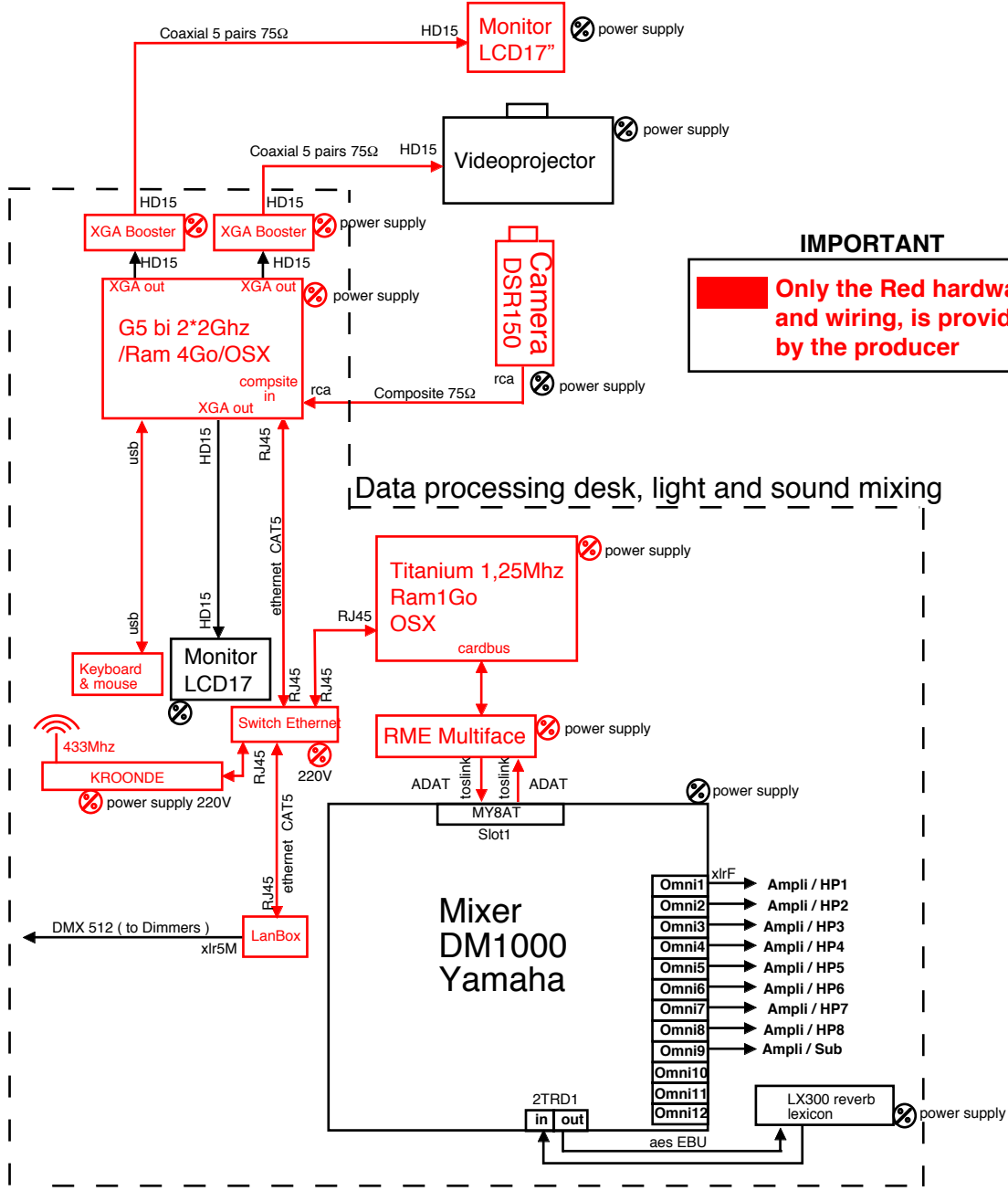
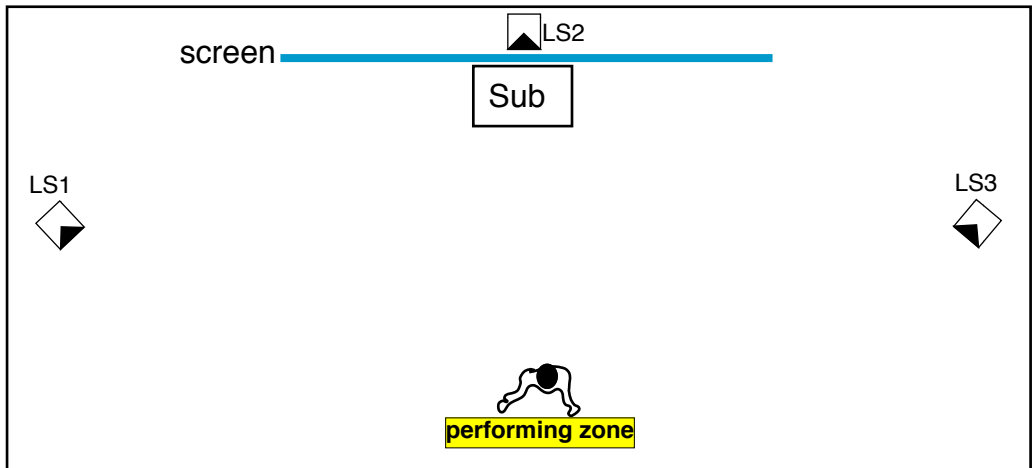
Specific hardware provided by the producer (Grame):

- 1 Monitor LCD 17" XGA for the stage
- 1 Camera SONY DSR150 + 1 stand or clamp
- 1 Keyboard and mouse for a G5 apple computer
- wires according to stage setting up and to supply to the wires provided by producer
- 1 Kroonde with 2 accelerometers 2D equipped on one tee-shirt
- 1 switch Ethernet 10baseT 4 ports
- 1 Titanium 1,25Ghz/1GoRam
- 1 RME Multiface + CardBus PCMCIA
- 1 G5 Bi 2 Ghz/Ram4Go + 1 Card Alchemy + 1 Card PCI ATI 9200 + 1 card PCI ATI9800pro
- 1 LanBoxLCE

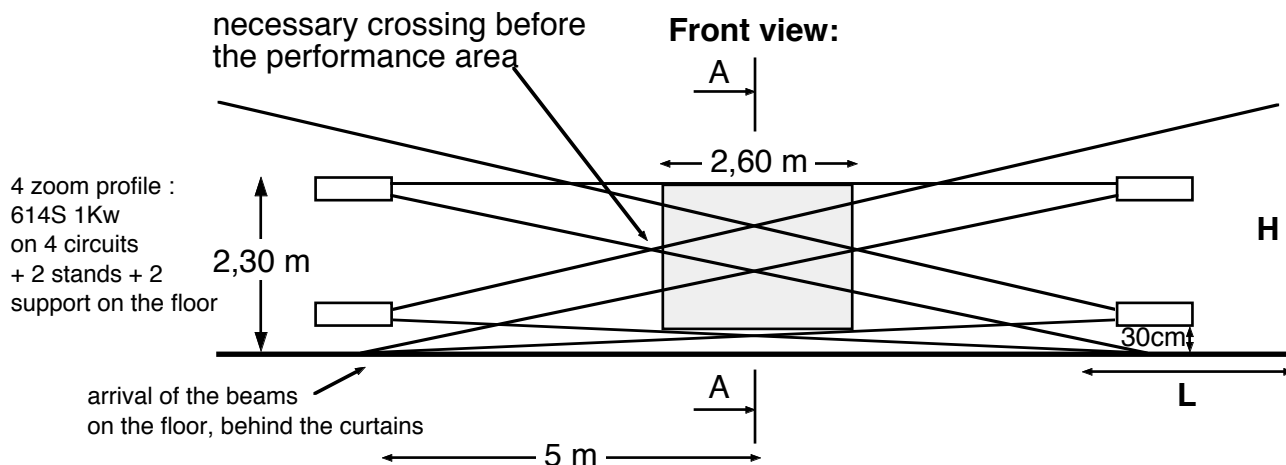
Stage setting up diagram "Light Music" by Thierry De Mey



Wiring details for "LIGHT MUSIC" by Thierry De Mey



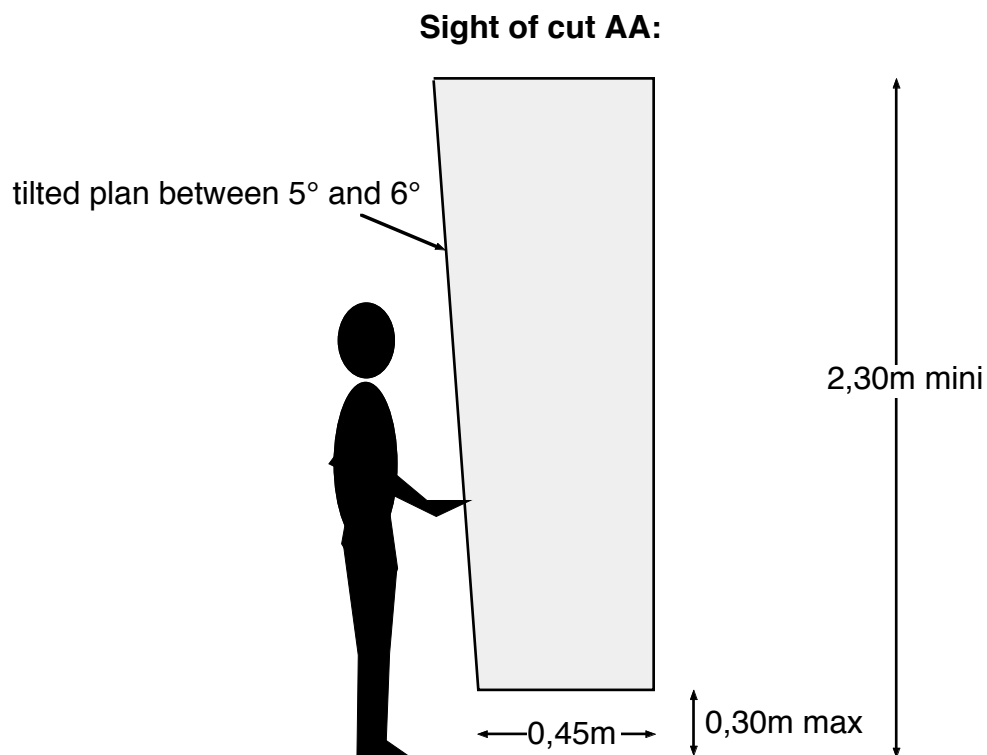
Zoom-profile detail performance area of "Light Music" by Thierry De Mey



The height **H** will depend on setting up of each concert hall.
The important thing is to mask, the reflexions of light on the walls

The width **L** of the "let us" curtains, allows to frame the zoom-profiles and the arrival of the beams on the floor.

□ : light performance area collected by the camera



The zoom profiles should shape vertical frames as homogeneous as possible.
To slightly give a slope to the vertical plane facing the performer.